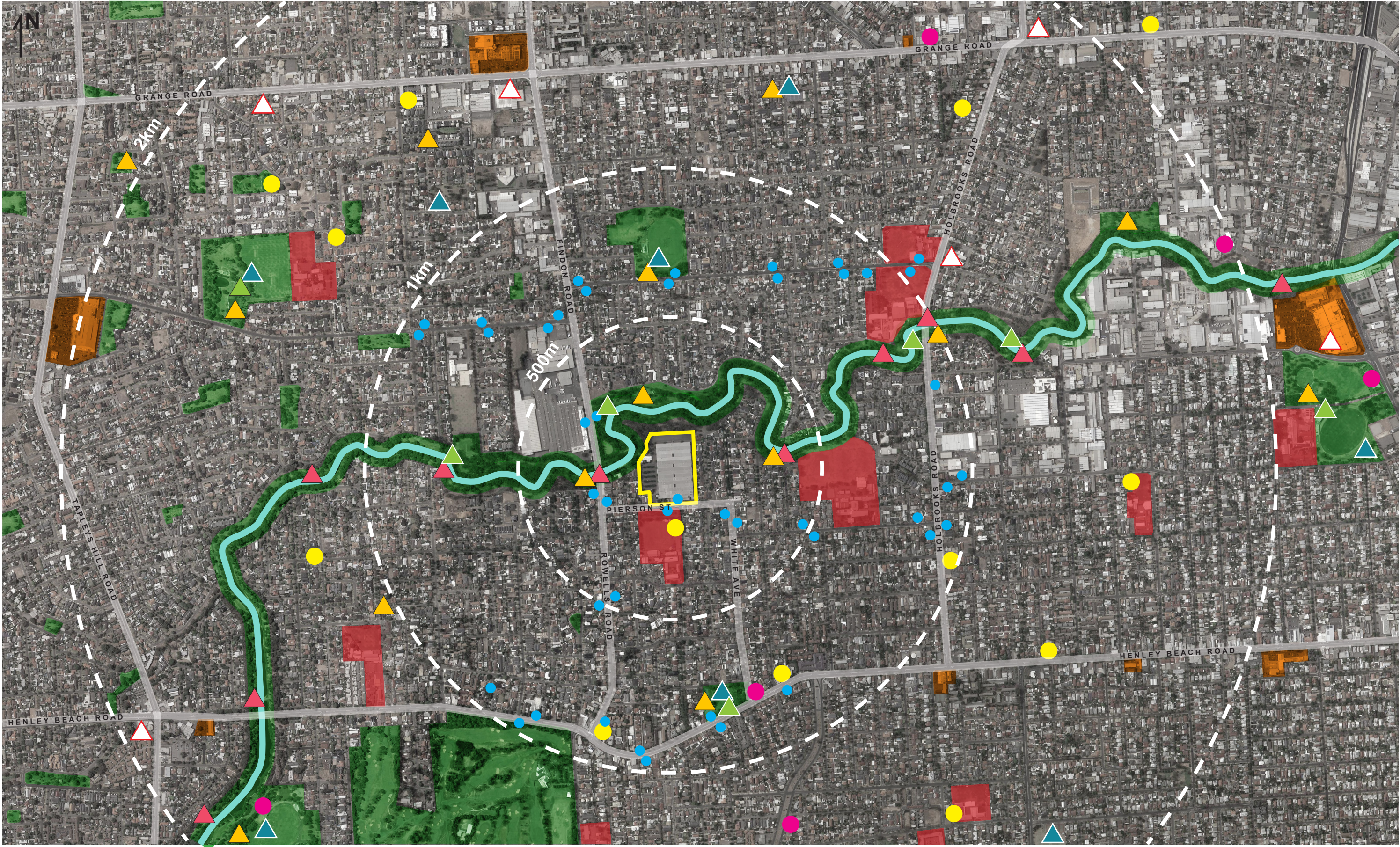


APPENDIX 8. INVESTIGATIONS – OPEN SPACE AND SOFT INFRASTRUCTURE



**Open Space and
Soft Infrastructure
Lockleys**

LEGEND

- Shops - Supermarkets
& Specialty Stores
- Open Space
- Schools

- River Torrens Linear Park
(Walking & Cycle Path)
- Affected Area

- Child Care Centre /
Kindergarten
- Bus Stop
(within 1km radius)
- Community Facility
- Medical Centre

- Pedestrian river crossing
- Sporting facilities
- Playground
- Public Toilets

July 2023
Revision B
1:4000 at A3

